



EPCS Switchgears

Electrical Power & Control Systems



Engineers

Programmers & Technocrats

Research & Development Personnel

Quality Controllers

Sales & Marketing Staff

Company Background

Established in 2008 EPCS Switchgears specializes in manufacturing, installing, testing and commissioning of complete range of Electrical Control Gears/Substation Equipment and Steel fabricated components. (L.T Main Panel Board, Power Distribution Board, Power Factor Improvement Plant, Boiler Control Panels, Lighting Distribution Boards, Auto main failure Panels, Auto Transfer Switches, Load Sharing/Synchronizing Panels, Motor Control Centers, Drives Panels, Chilling Plant Control Panels, Feeder Filler Panels, Change Over Panels, Bus Coupler Panels, Load Take Off Panels, Bus Tie Ducts, Street Light Poles, Cable Trays and Cable Ladders Equipped with sophisticated fabrication machines, the unit is situated in The Electrical Panels so manufactured by EPCS Switchgears find applications in almost every type of industry (Plot # 132 & 133-B Lahore Kasur Road, Small Industrial Estate, Iqbal Nagar, Kasur).

ISO 9001:2008 Certification

Company is also ISO 9001:2008 certified from International Industrial Certification, Worldwide Certification and inspected body Abu Dhabi-UAE.

FIELD OF ACTIVITIES

EPCS Switchgears is engaged in design, manufacturing & Installing of complete range of electrical control gear/sub Station. Equipment for application in chemical, textile, cement engineering and core Industries. Entire manufacturing operation of the company take place under one roof in constructed over a plot of 9000 SFT.

Personnel

At EPCS Switchgears people have been the key to the success of the company and today around 30 dedicated people in various capacities are looking after all the affairs of the company.

Infrastructure

EPCS Switchgears has a factory covered area of 3000 sq. Ft. And the Factory is constructed over a plot area of 9000 SFT, office block has a carpet area of 2400 SFT.

Markets Covered

All over Pakistan and Middle East

Market Network

Marketing is looked after by the Director Marketing.

He is assisted by two engineers.

Our Team

Behind the overwhelming success of our industry lie the industrious efforts of our team of proficient professionals. Over the years, our competent team has put in immense hard work and has worked with dedication in order to understand the client's requirements and caters to the same with efficiency. In our different departments our team members hold expertise in their respective areas of operation and use it to the fullest. Their experience in designing and developing software and electrical control panels has enable us to offer automation solutions on clients demands. In our team, we have:

- ❶ Engineers
- ❷ Programmers and technocrats
- ❸ Research and development personnel
- ❹ Quality controllers
- ❺ Sales and Marketing staff

Research & Development

A range like our needs to be updated from time to time so as to match the emerging market trends. The research and development department established by us helps in doing exactly the same. Manned by efficient researchers, this department has enabled us in innovating the technology used for production, improving the quality of products and increasing the production capacity in a cost-effective manner. The analysts conduct extensive research activities in relation to our product range and find out ways that can help us in upgrading and modifying the existing product line. With the assistance of marketing executive, they are able to understand the changing business trends and incorporate the same. Other than these, we also contribute in saving energy by developing panels that use power for achieving desired results.

Client Satisfaction

Over the years , we have proven to be successful in establishing a wide client base across Pakistan, Subcontinent and Middle East. With our ethical business practices and transparent dealings, we have made clients rely upon us and trust us for offering impeccable quality products. Our advanced infrastructure, in combination with the skilled manpower, has helped us in meeting the clients requirements successfully without any-hassle. Well tested on defined parameters, our products are assured features high operational efficiency and thus appreciated by our clients. In addition to optimal quality products we also facilitate our clients with the following:

- Customized products
- Bulk orders
- Timely delivery schedules
- Cost-effective prices
- Wide distribution network



Motto of the Organization

Being reliable in Quality Delivery, Price and Services
Partnering with customers in serving their Customers
Powering possibilities in harnessing electricity to work for you

Quality Policy

To have quality in every activity in order to consistently meet and exceed customer satisfaction

Quality Objectives

To ensure total customer satisfaction through products supplied and services rendered.
To motivate manpower to have commitment to quality and productivity by continuous improvisation in a healthy environment
To be recognized at National and International level in our area of activities and establish ourselves as a Brand Name

PRODUCTS

- ➔ Complete range of HT/LT Switchgear and Control gear with built in special protection devices like Earth fault,
- ➔ Over current, Short circuit, Under Voltage, Over Voltage and overheating etc as per IP-40, IP-44 IP-54, IP-64.
- ➔ Motor Control panels with DOL, ASDS, VSD and soft starters for complete range of all motors.
- ➔ Complete range of Boiler Control Panels
- ➔ Auto/Manual Power Factor Improvement Plant (PFI) equipment of 400v, 145V, 440V, 480V and 525 VAC
- ➔ Auto Main Failure/Auto Transfer Switch Panel (AMF/ATS Panel).
- ➔ LT Changeover Switches with LBS and ACB /MCCB with electrical/mechanical Interlocking system.
- ➔ Synchronizing and Load sharing Panels for Generators
- ➔ Transformer Protection Panels
- ➔ Bus Tie Duct (BTD) up till 6000 Amp
- ➔ Load Take Off Panels
- ➔ All Kinds of Cable Trays/Cable Ladders, hanging arrangement system & accessories
- ➔ Telephone Junction Boxes, Floor Boxes etc
- ➔ Street Light Poles /Lighting Poles
- ➔ Complete range of LT circuit Breakers, Magnetic Contactor, Over Load Relays, Timers, and Capacitors etc.
- ➔ External/Internal electrification of Industrial / Commercial buildings and Housing Societies
- ➔ Earth and lightning protection of Gnd Station /Substation and other installation as per IEEE standards
- ➔ General overhauling and maintenance of Power Transformers and H.T /L.T Panels



Technical Specifications of L.T Switchgear

Market Network

- i) The Panels shall be suitable for operation at $415 \pm 6\%$ volt, 50Hz, 3 Phase, 4 wire +E system.
- ii) The Panels offered shall be fabricated out of 2mm/ 1.6mm M.S Sheet and shall have modular construction.
- iii) Panels will be free standing, floor mounting type having provision for cable entry from bottom or top as per your requirement.
- iv) The Panels will be extensible type in design with dust and vermin proofing.
- v) The Panels will be in Fixed Type or Draw out Type execution as per requirement.

Sheer Metal Work

- i) The Switchgear frame shall be fabricated using mild structural sections of pressed and shaped cold rolled steel of thickness not less than 14 SWG
- ii) Frame shall be enclosed by sheet steel of thickness not less than 14SWG cold rolled smoothly finished levelled and free from flaws. Doors & covers shall be made of sheet of thickness not less than 1.6mm cold rolled sheet. Stiffeners shall be provided wherever necessary.
- iii) Cut-outs shall be true in shape and devoid sharp edges.
- iv) The complete structure shall be rigid, self supporting and free from twists and bends.

Painting

- i) Entire sheet metal work will undergo per-treatment covering decreasing, water sinking, derusting / phosphating using various tanks installed in paint shop.
- ii) After per-treatment as described above, the sheet metal is sprayed with high corrosion resistant Etch Primer. The finishing treatment shall be application of air drying paint after necessary putty work-
- iii) We also have Electrostatic Powder coating plant, Pure and as such are in a position to supply you POWDER COATED Panels in desired shade.

Panels Will Be

- i) of the metal enclosed, indoor, outdoor, floor mounted modular type construction.
- ii) of dust and vermin proof construction.
- iii) provided with labels on the front indicating the switchgear designation.
- iv) of uniform height of not more than 2450mm.
- v) provided with bus bars running all along the length of the panel.
- vi) shall be provided with doors having hinges and captive screws.

Bus Bars

- i) Bus Bars shall be of uniform cross-section throughout the length of the switchgear
- ii) Bus Bars shall be of high conductivity copper alloy as per EEC & BS requirement.
In Case of copper, current density will be equal to or less than 1.5 Amps per sq. mm
- iii) All bus Bars will be air insulated and will be black painted for better heat dissipation. Bus Bars will be codified in Red, Yellow, Blue and Black colour as per standard practices.
- iv) Bus Bars shall be adequately supported and braced to withstand the stresses due to a fault level

Internal Wiring

Wiring inside the switchgear shall be carried out with 1100/650 volt grade, PVC insulated, standard conductor wire of adequate sizes. Minimum size of conductor for power circuits will be 2.5 sq. mm copper. Control circuit will be wired with copper conductor of at least 2.5 sq. mm for CT circuit and 1.5 sq. mm for other circuits.

Medium Voltage Panels

The company specializes in the manufacturing of 11KV VCB Sf-6, OCB and LBS based Switchgear / Controlgear complete with automation, instrumentation, metering and protection for Industrial and commercial use per WAPDA specifications P-44:96.

Low Tension Panels

EPCS Switchgears has established a state-of-the-art facility in Manufacturing Low Tension Panel Boards. We are specialized in meeting the technical requirements through design, manufacture, test and supply of 330/415V L.T. Switch boards with all accessories for efficient and trouble free operations. The panels are metal-enclosures, free-standing compartmentalized, Modular type suitable for indoor and outdoor installations. The Panels are dust and vermin proof and the enclosure shall provide a degree of protection IP-40, IP-44, IP-50, IP-52, IP-54, The panel boards are fabricated out of adequate thickness mild steel Structural Sections. The frames shall be enclosures with cold rolled steel. Each cable chamber has cable entry from top or bottom with suitable removable gland plates. The cable chamber is provided with suitable supporting arrangement between the gland plate and terminals all covers, doors and joints are casketed using neoprene gaskets.

Synchronizing Control Panel

In an alternating current electric power system, Synchronizing is the process of catching the speed and frequency of a generator on other source to a running network. An AC generator cannot deliver power to an electrical grid unless it is running at the same frequency as the network.

Synchronization Panel are mainly designed and used to meet power system requirements. These Panels function both manually and with an automatic synchronizing function for two or more generator breakers. They are widely used in synchronizing generator and offering multiplex solution.



Medium Voltage Panels



Low Tension Panels



Synchronizing Control Panel



Motor Control Centers (MCC)

EPCS Switchgears has established a state-of-the-art facility in manufacturing LT Switchgear, Panel Boards. We are specialized in meeting the technical requirements through design, manufacture, test and supply of 415 V MCC Panel Boards with all accessories for efficient and trouble-free operations. Motor Control Centers are the panel assemblies such that all the motors of wide variety installed at different places for different applications in a workstation can be operated from one place with all the protection devices provided in the panels. These are available in a wide variety from single DOL panel for individual machines to as many DOL's as required by you in a single panel. We have the facility to manufacture MCC panels from MS Sheet duly powder coated these are manufactured in indoor type, Outdoor type, Flush type and Desk according to its application.

Our MCC involves following features:

- Remote Control operation facility
- MCCB for protection
- Bus Bars of proper rating duly covered with Acrylic sheet for safety.
- Copper strip for earthing
- Panel light and fan for ventilation.
- Custom Design
- Fixed type, free standing, floor mounting
- Extendable to both sides
- Cubical type compartmentalized construction
- Designed to meet climatic conditions
- Powder-coating with imported electrostatic powder gun and fully conveyor powder-coating plant



Motor Control Centers (MCC)

Automatic Power Factor Improvement Plant

EPCS Switchgears manufacturing PFI panels that offer a power factor from 0.95 to 0.99. The panel comprises of main bus bars, main MCCB, and MCB, Contactor, Relay HRC Fuse and Capacitor of Proper rating for every bank. The stages depend upon the Power load on that bank. Along with capacitors, Reactors are provided if there exists harmonics caused by non-linear power supply in the system.

Power Factor Concept

The power transmitted from the power plant to the power stations, from the power stations to the industries and from the industries to the machine results in large power losses due to the inductive loads. The pure inductive loads result in lagging power factor while the pure capacitive loads result in leading power factor and the pure resistive load does not have any effect on power factor. Maximum motors offer inductive loads, thus increasing the power losses.

Watt = Voltage x Current x Power Factor, Power Factor = Cos φ Where?

Is the angle between voltage wave & Current wave called the phase angle?

Smaller the phase angle, smaller will be the power losses. To improve the power factor, capacitors are installed in parallel with the main supply that offer leading power factor, and thus neutralize the effect of lagging power factor due to inductive.



Power Factor Concept

Harmonics Concept and Solution

Today every Machine is electronic controlled. All the electronic circuits run on SMPS that convert utility AC voltage to regulated low voltage DC for internal electronics. These non-linear power supplies draw current in high amplitude short pulses. These current pulses create significant distortion in the electrical current and voltage shape. This is referred to as harmonic distortion and is measured in total harmonic distortion (THD)/ Other equipments connected to the same supply are also affected by these harmonics to remove these harmonics, reactors are introduced in the system.

Power Distribution Boards

We provide custom built Distribution Boards to our customers. These Power Distribution boards are available in the all ranges the products are extremely easy to install owing to their modular design. This design provides them high flexibility thus saving a lot of time during installation. Manufactured using premium quality raw material, these products are widely acknowledged as a complete solution for power distribution.



Distribution Boards

Lighting Distribution Boards

We manufacture custom designed distribution boards used in final distribution to lighting and other loads. These are wall mounting type and manufactured suitable for indoor as well as outdoor installations.

Types of Distribution Board

- i) Concealed type Distribution Boards
- ii) Wall mounted type Distribution Boards

AMF/ATS Panels

Customers can avail from us a range of AMF Panels that is available in a wide range of 10KVA to 1500KVA. AMF stands for Automatic Start on Main Failure, as these are used for automatically changing over from the main electricity supply to the standby Generator in the event of failure of the main supply. On resumption of the main supply, the system automatically changes over from generator to main thereby eliminating the unnecessary load on the generator and turning it off. The range of AMF panels also features interlocked MCCBs, ACBs, and contactors.



AMF/ATS Panels

Feeder Pillars

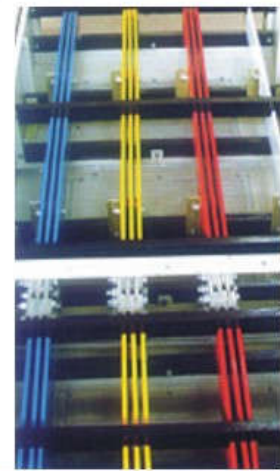
Pillars are the electrical control panels that are installed in the uncovered open areas. In these panels, the cable entry is from bottom only. We provide special features in these panels like, inclined top for protection from rain water proof solid angle iron frame welded to the bottom of the panel for grouting in earth to prevent in from damage in windstorms and havoc. Lockable doors these, panels are manufactured from M.S Sheet duly powder coated.

Bus Tie Ducts

Bus ducts serve the channel for high power transmission (More than 2500 Amperes) from The transformer to the main electrical distribution panel.

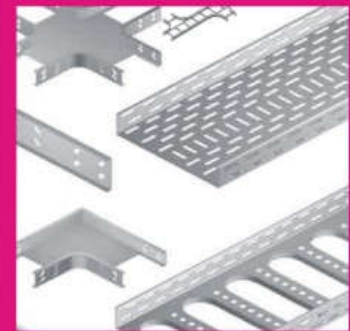
Our Bus Ducts involve following Special Features

- ◆ The phase bus bars are highly insulated from each other using heat shrinkable sleeves
- ◆ That offer high insulation.
- ◆ M.S Angle supports are provided for perfect fitting of the bus ducts.
- ◆ Electrolytic copper metals are used as conduction metals for the bus bars.
- ◆ Up to 3-meter long bus duct can be manufactured in one piece.
- ◆ M.S sheets is used to manufacture the sheet metal box for bus ducts
- ◆ Proper ventilation slots are provided on top and sides of the bus ducts.
- ◆ Proper spacing is provided between the phase bus bars.
- ◆ We are having special labour for the installation of bus ducts.
- ◆ We have installed bus ducts at far away sites as well.



Cable Ladders

We offer ladder type cable trays that possess strength and high capacity. These ladder Cable Trays are well suited to heavy duty power distribution in industrial facilities. Our range is made of mild steel, stainless steel, aluminum etc. These ladder cable trays are in compliance to various international standards and specifications.

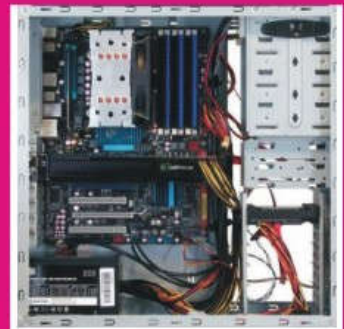


Cable Trays

We offer perforated type cables trays national & international standards in GI & MS sheets. These cable trays are being used for power & data cables.

UPS Panels and Cabinets

We provide Industrial UPS Panels and Cabinets are manufactured using high quality of raw material & switchgears. Available in several colors and sizes, our range finds a wide application in all types of industry. These panels and cabinets can be customized as per the specification of clients.



PARTICULARS OF COMPANY:

Corporate Business Name EPCS Switchgears

Head Office: 12-C, 1st Floor, Commercial Area Pak Arab Housing
Scheme, 17-KM, Ferozpur Road, Lahore-Pakistan

Factory: Plot # 132-133B, Lahore Kasur Road, Small Industrial Estate Iqbal Nagar,
Kasur-Pakistan

Phone No.: +92-42-35402531-33

Fax No.: +92-42-35923466

Cellular No: +92-300-4882138
 +92-322-4882138

E-mail: info@epcsswitchgear.com,

URL: www.epcsswitchgear.com

Income Tax No: 3244523-7

G.S.T No: 03-00-3244-523-19

Year of Establishment: 2008

A large, semi-transparent watermark of the EPCS logo is overlaid on the right side of the page. The logo consists of a stylized blue and grey graphic on the left, followed by the letters 'EPCS' in a large, bold, grey sans-serif font.

BANKS:

- i) Faysal Bank, Barket Ferozpur Road,
Lahore, Pakistan

- ii) Meezan Bank Ltd, Main Ferozpur Road,
Lahore-Pakistan

- iii) Allied Bank Ltd, Awan Market, Main Ferozpur Road,
Lahore-Pakistan



LIST OF STAFF/PROFESSIONALS

Sl.	Name of Professional	Designation	Education	Working Experience
01.	Mehar Mehmood Ahmed	Chief Executive	B-Tech (Electrical)	10 Years experience of design, Manufacturing, installation, testing of electrical Switchgears/ Control gears and Substation equipment and 05 years experience in Industrial marketing, Project Management and Human Resources. He has successfully executed a number of National and International contracts with WAPDA, PAEC, PWD, MES, WASA and other Government/Private organizations
02.	M. Ayub	Production Manager	F.A	10 years experiences of Project Management and Human Resources. He has successfully executed a number of National and International contracts with WAPDA, PAEC, PWD, MES, WASA and other Government/Private organizations
03.	Engr. Akbar Ali	Electrical Engineer	B.Sc (Electrical) University of Engineering & Technology Lahore	06 Years experience of designing, Manufacturing, installation, testing and Commissioning of electrical Switchgears/ Control gears and Substation equipment

04.	Muhammad Asif	Mechanical Engineer	B.Sc (Mechanical) University of Engineering & Technology Lahore	05 Years experience of designing, Manufacturing, of electrical Switchgears/ Control gears and Substation equipment
05.	Muhammad Junaid	Manager Marketing	M.B.A (MBA Marketing) Numl Islamabad	05 years experience in Commercial buildings & Industrial marketing
06.	Syed Shan Muhammad	Sale Engineer	B.E Electrical Engineering	04 years experience in Electrical Panel Maintenance and Design Department
07.	Maqsood Ahmed	Sales Officer	F.A (Punjab University Lahore)	03 years experience in Commercial buildings & Industrial marketing
08.	M. Naeem Sajjad	Sales Engineer	D.A.E (Electrical) G.C.T Lahore	04 years experience in Commercial buildings & Industrial marketing
09.	M. Muhammad Rizwan	Finance Manager	BBA (Comsit Collage Lahore)	04 years experience in Banking & finance
10.	Muhammad Umer	Accountant	B.A (Punjab University Lahore)	05 years experience in accounts
11.	Ghulam Yasin	Manager Purchase	F.A (Islamia Degree Collage Kasur)	10 Years experience of purchasing electrical equipment
12.	Muhammad Tufail	Store Keeper	M.A Urdu (University of Punjab, Lahore)	10 Years experience of Store
13.	Mr. M. Javed	Supervisor (Mechanical)	Matric	20 Years experience of design and fabrication of HT/LT Panels and Distribution Boards
14.	Muhammad Waheed	Supervisor (Electrical)	D.A.E. (Electrical)	08 Years experience of wiring, installation, testing and

				commissioning of HT/LT Panels and Distribution Boards
15.	Mr. Nadeem Ahmed	Senior Technician	Matric	05 Years experience of wiring, installation, testing and commissioning of HT/LT Panels and Distribution Boards
16.	Technicians 10 Nos			Various academic background and Practical vision as per requirement of their position.



LIST OF MAJOR PROJECTS COMPETED

- **Industrial Sector**

Sr.	Name of Client	Address	Description	Consultant
01.	Crescent Group of Companies	A9th Floor, Sidco Avenue Centre, 264 R. A. Lines, Karachi- Pakistan	Supply of L.T Main Panel Board, Power Distribution Board, 1500KVAR Power Factor Improvement Plant, Motor Control Centers for Crescent Hadeed (Pvt.) Ltd	Crescent Hadeed (Pvt.) Ltd
02.	DDFC Group of Companies (Pvt.) Ltd	18-KM, Multan Road, Lahore	Supply of L.T Switchgear Boiler Control Panels and Motor Control Centers for different projects	DDFC (Pvt.) Ltd Pak
03.	Noon Group of Companies (Pvt.) Ltd	6 th Floor, EFU House, Jail Road, Goldberg, Lahore.	Supply of L.T Switchgear Main Panel Board with 1200KVAR Power Factor Improvement Plant	EPCS Switchgear Pak
04.	Al- Raed Al Arabi Industry & Trading Co, Ltd	2 nd Industrial Area, Riyadh 11481 P.O Box 3516	Supply of L.T Switchgear Main Panel Board with 4X600KVAR Power Factor Improvement Plant with Harmonic Filters	Lifasa Spain
05.	Orta Anadolu Textile Bahrain Company W.L.L Kingdom of Bahrain (Power House)	Orta Anadolu Textile Bahrain Company W.L.L Kingdom of Bahrain	Supply of L.T Switchgear, LT Main Panel Board, 800KVAR Power Factor Improvement Plant, Motor Control Panel, Load Take Off Panel Boards	Micro vision Environ Projects (Pvt.) Ltd Ahmadabad, India
06.	Simz Pharmaceutical Ltd	Sunder Industrial Estate, Raiwind Road, Lahore	Supply of L.T Switchgear L.T Main Switch, L.T Main Panel Board with 300KVAR Power Factor Improvement Plant, Power and Lighting Distribution Boards	ECS (Electrical Consulting Services) Lahore, Pak
07.	Sapphire Fabrics (Pvt.) Ltd	7-A/K Main Boulevard Gulberg II, Lahore-Pakistan	Supply of L.T Switchgear VFD Panel Board, Power and Lighting Distribution Boards	Sapphire Fabrics (Pvt.) Ltd
08.	City Steel UAE Mills (Pvt.) Ltd	17-KM, Sheikhpura Road, Lahore	Supply of L.T Switchgear L.T Main Panel with 800KVAR PFI Plant, MCC Panel (Motor Control Centers) for City Steel UAE Mills Ltd	EPCS Switchgear Pak
09.	ABB (Pvt.) Ltd	Pakistan Engg. Congress Building, 97-A/D-1, 1st & 2nd Floor, Liberty Market, Gulberg - III, Lahore	Supply of L.T Switchgear, LT Main Panel Board, Variable Frequency Drives Panel Board for Sapphire Dying Unit	ABB Automation (Pvt.) Ltd

10.	Synthetic Products Enterprises (Pvt.) Ltd	127-S, Quaid-e-Azam, Industrial Estate Kot Lakhpat, Lahore.	Supply of L.T Switchgear, L.T Main Panel Board, Change Over Panel Board with 1200KVAR PFI Plant, Power and Lighting Distribution Boards	SPEL (Pvt.) Ltd
11.	Descon Oxychem (Pvt.) Ltd	17.5-KM, Sheikhpura Road, Lahore	Supply of L.T Switchgear L.T Main Panel, Feeder Pillar Panel Board, Power and Lighting Distribution Boards	Descon Oxychem (Pvt.) Ltd
12.	Ittehad Sugar Mills (Pvt.) Ltd	17.5-KM, Sheikhpura Road, Lahore	Supply of L.T Switchgear L.T Main Panel, Motor Control Centre (MCC) , Power and Lighting Distribution Boards	Heavy Mechanical Complex Ltd
13.	Ahmed Fine Weaving Mills Unit-2	Multan	Supply of Boiler Control Panel Board for Ahmed Fine Weaving Mills Unit-2	DDFC Group of Companies (Pvt.) Ltd
14.	ATS Synthetic (Pvt.) Ltd.	ATS Height 7-Durani Road, Lahore-Pakistan	Supply of Boiler Control Panel Board for ATS Synthetic Ltd	DDFC Group of Companies (Pvt.) Ltd
15.	Rupali Group of Companies (Pvt.) Ltd	30.2KM, Lahore Sheikhpura Road, Lahore	Supply of Boiler Control Panel Board Rupali Polyester (Pvt.) Ltd	DDFC Group of Companies (Pvt.) Ltd
16.	City Steel UAE Mills (Pvt.) Ltd	17-KM, Sheikhpura Road, Lahore	Supply of L.T Switchgear L.T Main Panel with 800KVAR PFI Plant, MCC Panel (Motor Control Centers) for City Steel UAE Mills Ltd	EPCS Switchgear Pak
17.	Samand Sugar Mills Ltd	Dera Ismail Khan-Pakistan.	Supply of L.T Switchgear, Power and Lighting Distribution Boards, Samand Sugar Mills Ltd	Asian Consulting Engineers (Pvt.) Ltd
18.	Hussain Weaving Mills Ltd.	Faisalabad Vehari Road, Multan-Pakistan.	Supply of Boiler Control Panel Board Hussain Weaving Mills Ltd.	DDFC Group of Companies (Pvt.) Ltd
19.	Gulf Power Ltd.		Supply of Boiler Control Panel Board Gulf Power Ltd.	DDFC Group of Companies (Pvt.) Ltd
20.	Umar Industries Ltd,	Sundar Industrial Estate, Raiwand Road, Lahore-Pakistan	Supply of L.T Switchgear, L.T Main Panel Board with 150KVAR PFI Plant, Power and Lighting Distribution Boards	EPCS Switchgear-Pakistan
21.	Sardarpur Textile Mills Ltd	46KM, Multan Road, Phool Nagar-Pakistan	Supply installation, testing and commissioning of L.T Switchgear, 4000A Bus Tie Duct	EPCS Switchgear-Pakistan
22.	Amad Enterprises	77-S, Quaid-e-Azam, Industrial Estate Kot Lakhpat, Lahore.	Supply of L.T Switchgear, L.T Main Panel Board, Change Over Panel Board with 200KVAR PFI Plant, Power and Lighting Distribution Boards	EPCS Switchgear-Pakistan

23.	Shujabad Weaving Mills Ltd	19KM, Khanewal Road, Multan-Pakistan	Supply of L.T Switchgear, L.T Main Panel Board, Change Over Panel Board with 600KVAR PFI Plant	Shujabad Weaving Mills Ltd
24.	Nescamp (Pvt.) Ltd,	18KM, Ferozpur Road, Lahore.	Supply of L.T Switchgear, L.T Main Panel Board with 300KVAR PFI Plant, Lighting and Power Distribution Boards, for Nescamp (Pvt.) Ltd	EPCS Switchgear-Pakistan
25.	Nescamp (Pvt.) Ltd,	18KM, Ferozpur Road, Lahore.	Supply of L.T Switchgear, L.T Main Panel Board, Lighting and Power Distribution Boards, for PPW Karachi	PPW (Pvt.) Ltd
26.	Crescent Bahuman Ltd.	40-A , Off Zafar Ali road , Gulberg V , Lahore	Supply of Boiler Control Panel Board for Crescent Bahuman Ltd	DDFC Group of Companies (Pvt.) Ltd
27.	ICI Paints (Pvt.) Ltd	346-Main Ferozpur Road, Lahore.	Supply of Boiler Control Panel Board for ICI Paints (Pvt.) Ltd	DDFC Group of Companies (Pvt.) Ltd
28.	Shahbaz Garments (Pvt.) Ltd,	30-KM, Sheikhpura Road, Faisalabad	Supply of Boiler Control Panel Board for Shahbaz Garments (Pvt.) Ltd,	DDFC Group of Companies (Pvt.) Ltd
29.	Reliance Weaving Mills Ltd	2nd Floor, Trust Plaza, L.M.Q. Road Multan	Supply of Boiler Control Panel Board for Reliance Weaving Mills Ltd	DDFC Group of Companies (Pvt.) Ltd
30.	Sapphire Textile Weaving Mills Ltd,	7 A-K, Main Boulevard, Gulberg 2, Lahore, Pakistan.	Supply of Boiler Control Panel Board for Sapphire Textile Weaving Mills Ltd	DDFC Group of Companies (Pvt.) Ltd
31.	Fatima Fertilizer Company Ltd,	E-110, Khyaban-E-Jinnah, Lahore-Cantt	Supply of L.T Switchgear, L.T Manual Change Over Switch for Fatima Fertilizer Company Ltd, Sadiqabad	Fatima Fertilizer Company Ltd,
32.	Coco Cola International (Pvt.) Ltd	Hussain Chock Gulberg, Lahore-Pakistan	Supply of L.T Switchgear, L.T Main Panel Board with 150KVAR PFI Plant, AMF/ATS Panel Board, Power and Lighting Distribution Boards for Head Office Cocoa cola International (Pvt.) Ltd	Al-Sharaf Engineering Services,
33.	Genesis Pharmaceuticals (Pvt.) Ltd	71-A, Cavalry Ground, Lahore-Pakistan	Supply of L.T Switchgear, L.T Main Panel Board with 150KVAR PFI Plant, AMF/ATS Panel Board, Power and Lighting Distribution Boards	Barqab Engineering Services
34.	Pharmalord Pharmaceuticals (Pvt.) Ltd	TDA, Colony Layya-Pakistan	Supply of L.T Switchgear, L.T Main Panel Board with 200KVAR PFI Plant, AMF/ATS Panel Board, Power and Lighting Distribution Boards	EPCS Switchgear Pak

35.	Descon Engineering Ltd	2 Km, Defence Road, Off 24-Km Multan Road, Chung, Lahore-Pakistan	Supply of L.T Switchgear, Motor Control Centre, ASD, DOL & VSD starters for Yunas Textile Mills Ltd	Descon Engineering Ltd
36.	Millet Equipment Limited	10 Km, Raiwind Road, Lahore-Pakistan	Supply of L.T Switchgear, Manual Synchronizing Panel Board for 3X800KVA Gensets	EPCS Switchgear
37.	Synthetic Products Enterprises (Pvt.) Ltd	127-S, Quaid-e-Azam, Industrial Estate Kot Lakhpat, Lahore.	Supply of L.T Switchgear, L.T Manual Change Over Panel Board	SPEL (Pvt.) Ltd
38.	Fatima Fertilizer Company Ltd,	E-110, Khyaban-E-Jinnah, Lahore-Cantt	Supply of L.T Switchgear, Lighting & Power Distribution Board for Fatima Fertilizer Company Ltd, Sadiqabad-Pakistan	Fatima Fertilizer Company Ltd,
39.	Fatima Fertilizer Company Ltd,	E-110, Khyaban-E-Jinnah, Lahore-Cantt	Supply of L.T Switchgear, ASD & DOL Starters for Fatima Fertilizer Company Ltd, Sadiqabad-Pakistan	Fatima Fertilizer Company Ltd,
40.	Treet Corporation Limited	72-B, Quaid-e-Azam, Industrial Estate Kot Lakhpat, Lahore.	Supply of L.T Switchgear L.T Panel Boards with 600KVAR PFI Plant for Treet Blade Factory	Treet Corporation
41.	Pharmagen Pharmaceuticals Ltd,	Kot Nabi Bukshwala, 34-KM, Ferozepur Road, Lahore-Pakistan	Supply of L.T Switchgear, LT Main Panel Board, 400KVAR Power Factor Improvement Plant, Boiler Control Panel, Motor Control Panel, Sub Main Panel Board	ECS (Electrical Consulting Services) Lahore, Pak
42.	Remedy Pharmaceuticals (Pvt.) Ltd,	23-KM Raiwind Road, Lahore-Pakistan	Supply of L.T Switchgear, LT Main Panel Board, 200KVAR Power Factor Improvement Plant, Motor Control Panel, Sub Main Panel Board, Power & Lighting Distribution Boards	Watts Engineering Lahore, Pakistan
43.	Pak Panther Spinning Mills Ltd (Power House)	8-KM Raiwind Manga Road, Lahore-Pakistan	Supply of L.T Switchgear, LT Main Panel Board, 400KVAR Power Factor Improvement Plant, Motor Control Panel, Load Take Off Panel Boards	Watts Engineering Lahore, Pakistan
44.	Associated Industries Ltd (Shama Ghee Mills Ltd)	Industrial Area Amangarh, Nowshera, Khyber	Supply of L.T Switchgear, LT Main Panel Board, 600KVAR Automatic	EPCS Switchgear

		Pukhtoonkhan-Pakistan	Power Factor Improvement Plant for Shama Ghee Mills Ltd	
45.	Haleeb Foods Ltd	E Floor Ali Tower, M.M Alam Road, Lahore-Pakistan	Supply of L.T Switchgear, Electric Panel Boards SS type for Haleeb Foods Ltd Plant	Haleeb Foods Ltd
46.	Starlet Innovations (Pvt.) Ltd	20-KM Lahore Sheikhpura Road, Pakistan	Supply of L.T Switchgear, LT Main Panel Board, 200KVAR Power Factor Improvement Plant, Sub Main Panel Boards, Light & Power Distribution Boards	Watts Engineering Lahore, Pakistan
47.	Shama Ghee Mills Ltd	Amangarh Industrial Estate, Nowshera-Pakistan	Supply, Installation, Testing & Commissioning of L.T Switchgear, 600KVAR Auto/Manual Power Factor Improvement Plant	EPCS Switchgear
48.	Sana Embroidery (Pvt.) Ltd	1st Floor Rang Mahal Centre, Lahore-Pakistan	Supply of L.T Switchgear, LT Main Panel Board, 200KVAR Power Factor Improvement Plant, Sub Main Panel Boards, Light & Power Distribution Boards	EPCS Switchgear
49.	Mr. Denim (Pvt.) Ltd	83-M, Quaid-e-Azam, Industrial Estate Kot Lakhpat, Lahore.	Supply of L.T Switchgear Manual Change Over Panel Boards for Mr. Denim (Pvt.) Ltd	EPCS Switchgear Pak
50.	Synthetic Products Enterprises (Pvt.) Ltd	127-S, Quaid-e-Azam, Industrial Estate Kot Lakhpat, Lahore.	Supply of L.T Switchgear, L.T Main Panel Board with 300KVAR Power Factor Improvement Plant, Cable Trays & Breakets	SPEL (Pvt.) Ltd
51.	Roshan Packages (Pvt.) Ltd	325-G-III, M.A Johar Town, Lahore -Pakistan	Supply of Cable Trays & Breakets	EPCS Switchgears
52.	Askari Apparel (Pvt.) Ltd	Sunder Industrial Estate, Lahore -Pakistan	Supply & Installation of Cable Trays & Breakets	EPCS Switchgears
53.	Synthetic Products Enterprises (Pvt.) Ltd	127-S, Quaid-e-Azam, Industrial Estate Kot Lakhpat, Lahore.	Supply of L.T Switchgear, L.T Main Panel Board with 300KVAR Power Factor Improvement Plant	SPEL (Pvt.) Ltd
54.	Fatima Fertilizer Company Ltd	Sadiqabad, Distt RYK	Supply of L.T Switchgear, Power Distribution Boards,	Fatima Group



• **Commercial & Infrastructure Sector**

Sr.	Name of Client	Address	Description	Name of Project	Consultant
01.	National Construction Limited	NC House 26, Mauve Area, G-9/I, Islamabad-Pakistan	Supply of L.T Switchgear, LT Main Panel Board, Motor Control Centre, 200KVAR Power Factor Improvement Plant, AMF/ATS Panel Board for 400KVA Genset and Power Cable Trays	Pakistan Planning & Management Institute, Islamabad-Pakistan (Hostel Block)	National Engineering Service, Lahore Pakistan
02.	National Construction Limited	NC House 26, Mauve Area, G-9/I, Islamabad-Pakistan	Supply of L.T Switchgear, LT Main Panel Board, Motor Control Centre, 300KVAR Power Factor Improvement Plant, AMF/ATS Panel Board for 400KVA Genset and Power Cable Trays	Pakistan Planning & Management Institute, Islamabad-Pakistan (Main Building)	National Engineering Service, Lahore Pakistan
03.	Babar Electric Company	House#67, St#2, Cavalry Ground, Lahore	Supply of L.T Switchgear, L.T Main Panel Board, Emergency Main Panel Board, Feeder Fillers, Lighting & Power Distribution Boards	Bus Rapid Transit System, Ferozpur Road, Lahore-Pakistan	National Engineering Service, Lahore Pakistan
04.	H.A Construction JV Al-Imam Enterprises (Pvt.) Ltd	272-C, New Muslim Town, Lahore	Supply of L.T Switchgear HVAC Panels (Motor Control Centers) Cable Trays, Cable Ladders	Punjab Forensic Science Laboratory, Thokar Niaz Baig, Multan Road, Lahore	National Engineering Service, Lahore Pakistan
05.	Sash International (Pvt.) Ltd	272-C, New Muslim Town, Lahore	Supply of L.T Switchgear L.T Main Switch, L.T Main Panel Board with 800KVAR Power Factor Improvement Plant, Power and Lighting Distribution Boards	(PCB) Rawalpindi Cricket Stadium, Rawalpindi	Fareed Associates Ltd Karachi, Pak
06.	WR Engineering Associates Ltd	1 st Floor, Aptuma House, Hayatabad, Peshawar	Supply of L.T Switchgear L.T Main Switch, 2 No L.T Main Panel Board with 1200KVAR Power Factor Improvement Plant, Power and Lighting Distribution Boards	Judicial Complex Peshawar	MEP Solutions Lahore, Pak
07.	Mughal e Azam Banquet Complex	10-Aibak Block, New Garden Town, Lahore	Supply of L.T Switchgear L.T Main Switch, L.T Main Panel Board with 400KVAR Power Factor Improvement Plant, Power and Lighting Distribution Boards	Maharaja Banquet Hall, main Peco Road township, Lahore	International Engineers
08.	BRD Bina Puri (Pvt.) Ltd (Malaysian Company),	141-CCA, Sector DD, Phase IV, D.H.A Lahore.	Supply of L.T Switchgear Lighting and Power Distribution Boards for Phase-6, Defence Housing Authority, Lahore	174- Houses at Phase-6, Defence Housing Authority, Lahore	Electro Serve Pak
09.	Riaz ud din Engineering (Pvt.) Ltd	81A Abu Bakar Block, New Garden Town,	Supply, installation, testing and commissioning of L.T Switchgear L.T Main Switch, L.T Main Panel Board,	PTCL Ware House Quaid e Azam industrial estate, Kot Lakhpat, Lahore-	EPCS Switchgear, Pak

		Lahore	Power, Lighting Distribution Boards, fans, lights and power cables	Pakistan EPCS Switchgear, Pakistan	
10.	Super Hote (Pvt.) Ltd	Mardan-Pakistan	Supply of L.T Switchgear, L.T Main Panel Boars, with 200KVAR PFI Plant, Emergency Main Panel Board, Lighting and Power Distribution Board	Bacha Khan Monument at Mardan	ECS (Electrical Consulting Services) Lahore, Pak
11.	Abbas Construction Company	79, I&T Centre, G-8/1, Islamabad	Supply of L.T Switchgear L.T Panel Boards, Power and Lighting Distribution Boards	Asia Centre New Garden Town, Lahore	CITE Architect/Planning & Design Group
12.	Qavi Engineers (Pvt.) Ltd	Suite#7, 3 rd Floor, Amman Business Centre, Block H-3, Commercial Zone Shahr-e-Expo, M.A Johar Town, Lahore	Supply of L.T Switchgear, Power Distribution Panel, Cable Trays and accessories	Lahore Expo Centre, Johar Town, Lahore-Pakistan	Nayyar Ali Dada Associates & Supervision Nespak, Lahore
13.	Ijaz & Company	Office # 54, 1 st Floor, Farooq Centre, Mcleod Road, Lahore	Supply of L.T Switchgear Distribution Board A/C for Lahore Gymkhana, Upper Shahr Quaid e Azam, Lahore	Lahore Gymkhana, Upper Shahr Quaid e Azam, Lahore	Nespak, Lahore
14.	MAK & Associates	Office # 1, 5 th floor, Abrar Centre, 25-main Wahdat Road, Lahore.	Supply of L.T Switchgear, L.T Main Panel Board, Cable Trays & Cable Ladders	Foreign Christian Collage, Lahore	Watts Engineering Services
15.	Integrated Engineering Services (Pvt.) Ltd,	344-XX, DHA Lahore.	Supply of L.T Switchgear L.T Main Panel, Motor Control Centre (MCC) , Power and Lighting Distribution Boards	Ittehad Sugar Mills Ltd,	Integrated Engineering Services (Pvt.) Ltd,
16.	Bestow Interiors (Pvt.) Ltd,	402-4 th Floor, City Tower, Main Boulevard, Gulberg-II, Lahore.	Supply of L.T Switchgear, L.T Main Panel Board with 300KVAR PFI Plant, AMF/ATS Panel Board, Power, Lighting Distribution Boards, Cable Trays	Zhong Telecom Pakistan (PVT.) Ltd. Zonal Office, Lahore	SEM Engineers, Islamabad-Pakistan
17.	Bestow Interiors(Pvt.) Ltd,	402-4 th Floor, City Tower, Main Boulevard, Gulberg-II, Lahore.	Supply of L.T Switchgear, L.T Main Panel Board with 200KVAR PFI Plant, AMF/ATS Panel Board, Power, Lighting Distribution Boards,	Alcatel Lucent Pakistan (PVT.) Ltd.	D.Beyond Architect & Interior Consultancy, Islamabad-Pakistan

18.	New Qadri Electric Company	Karachi.	Supply of L.T Switchgear, L.T Main Panel Board with 100KVAR PFI Plant, Power, Lighting Distribution Boards,	MCB Bank Ltd, Shadewal Chock, Johar Town, Lahore.	Hussnain Associates, Lahore-Pakistan
19.	New Qadri Electric Company	Karachi.	Supply of L.T Switchgear, L.T Main Panel Board with 200KVAR PFI Plant, Power, Lighting Distribution Boards,	Cisco Office Islamabad	Nawazi Associates-Karachi
20.	LDA-WASA	Mehmood Booty Disposal, Lahore	Supply of L.T Switchgear, L.T Main Panel Board with 1200KVAR PFI Plant for Mehmood Booty Disposal, Lahore-Pakistan	Mehmood Booty Disposal, Lahore-Pakistan	EPCS Switchgear-Pakistan
21.	WR Engineering Associates	1st Floor, Aptuma House, Hyatabad, Peshawar	Supply of L.T Switchgear, Power and Lighting Distribution Boards,	Women & Child Hospital Peshawar-Pakistan	WR Engineering Associates
22.	Linkers Construction Company Ltd, Lahore.	Gulberg, Lahore-Pakistan	Supply of L.T Switchgear, Power and Lighting Distribution Boards,	174-House Phase-6, D.H.A, Lahore-Pakistan	Electro Serve Pak
23.	Linkers Construction Company Ltd, Lahore.	Gulberg, Lahore-Pakistan	Supply of L.T Switchgear, L.T Main Panel Board with 200KVAR PFI Plant, Power and Lighting Distribution Boards,	M.D House of Linker Construction Phase-8, D.H.A, Lahore-Pakistan	Famous Engineering Consultant
24.	Altiva Chaudhary Construction (Pvt.) Ltd	58-	Supply of L.T Switchgear, L.T Main Panel Boars, Distribution Board for MRI & CT Scan Machines	Services Hospital, Karachi-Pakistan	Mediquips Advance Medical Technology
25.	Bhatti Developers	Hassan Centre, Main Boulevard, D.H.A, Lahore-Cantt-Pakistan	Supply of L.T Switchgear, L.T Main Panel Board with 300KVAR PFI Plant, Power and Lighting Distribution Boards,	Heaven Hotel, Main Boulevard, D.H.A, Lahore- Pakistan	International Engineers
26.	New Qadri Electric Company	Karachi.	Supply of L.T Switchgear, L.T Main Panel Board with 100KVAR PFI Plant, Power, Lighting Distribution Boards,	Acacia Laundry Gulf Club Karachi (Marketing Office)	
27.	Altiva Chaudhary Construction (Pvt.) Ltd	58-	Supply of L.T Switchgear, L.T Main Panel Boars, Distribution Board for MRI & CT Scan Machines	Services Hospital, Larkana-Pakistan	Mediquips Advance Medical Technology

28.	Altiva Chaudhary Construction (Pvt.) Ltd	58-	Supply of L.T Switchgear, L.T Main Panel Boars, Distribution Board for MRI & CT Scan Machines	Services Hospital, Nawabshah-Pakistan	Mediquips Advance Medical Technology
29.	Altiva Chaudhary Construction (Pvt.) Ltd	58-	Supply of L.T Switchgear, L.T Main Panel Boars, Distribution Board for MRI & CT Scan Machines	Services Hospital, Hyderabad-Pakistan	Mediquips Advance Medical Technology
30.	Soultech Engineering Services & Solutions	Suite#6, 1 st Floor Nawab Building, Shadman Market, Shadman Lahore.	Supply of L.T Switchgear, L.T Main Panel Boars, Distribution Board	Warid Telecom Tower at different sites	Soultech Engineering Services & Solutions
31.	Bestow Interiors (Pvt.) Ltd,	402-4 th Floor, City Tower, Main Boulevard, Gulberg-II, Lahore.	Supply of L.T Switchgear, L.T Main Panel Board, Power and Lighting Distribution Boards,	HBL Bank Ltd, (Auditorium Hall) Main Branch at Mall Road, Lahore	Nayyar Ali Dada Associates
32.	The Engineers (HVAC Contractor),	P-16, 3 rd Floor, Bilal Center Nicholson Road, Lahore.	Supply of L.T Switchgear, L.T Main Panel Board, Motor Control Centre for different Projects		The Engineers (HVAC Contractor),
33.	House of Mr. Aly Hayat Khan	84-Sarfaz Sadeeqi Road, Lahore-Cantt	Supply of L.T Switchgear, L.T Main Panel Board with 50KVAR PFI Plant, AMF/ATS Panel Board, Lighting and Power Distribution Boards	House of Mr. Aly Hayat Khan	EPCS Switchgear-Pakistan
34.	New Qadri Electric Company	Karachi	Supply of L.T Switchgear, L.T Main Panel Board, Lighting and Power Distribution Boards	Amin Tai Securities Ltd, Karachi-Pakistan	A.A Techno Engineers, Karachi
35.	A.A & Associates	4-CCA, 1 st Floor, Phase IV, Defence Housing Authority, Lahore-Pakistan	Supply of L.T Switchgear, L.T Main Panel Board, Power and Lighting Distribution Boards	MCB Bank Ltd, Bahawalpur Branch	Watts Engineering Services
36.	A.A & Associates	4-CCA, 1 st Floor, Phase IV, Defence Housing Authority, Lahore-Pakistan	Supply of L.T Switchgear, L.T Main Panel Board, Power and Lighting Distribution Boards	MCB Bank Ltd, AL-73 Branch	Watts Engineering Services

37.	Mian Wazir Construction (Pvt.) Ltd	Phase Viii, Defence Housing Authority, Lahore-Pakistan	Supply of L.T Switchgear, L.T Main Panel Board, Power and Lighting Distribution Boards	Plaza Building Mian Wazir Hussain at Plot # 134 Sector-A, Commercial Broadway Phase-VIII, D.H.A, Lahore	Al-Sharaf Engineering Services,
38.	PDA (Peshawar Development Authority)		Supply of L.T Switchgear, L.T Main Panel Board, 300KVAR Power Factor Improvement Plant, Power and Lighting Distribution Boards	LCB Phase-VII, Hayatabad, Peshawar-Pakistan	WR Engineering Associates
39.	WR Engineering Associates		Supply of L.T Switchgear, L.T Main Panel Board, 100KVAR Power Factor Improvement Plant, Power and Lighting Distribution Boards	Rescue 1122, office building Peshawar-Pakistan	WR Engineering Associates
40.	Bestow Interiors (Pvt.) Ltd,	402-4 th Floor, City Tower, Main Boulevard, Gulberg-II, Lahore.	Supply of L.T Switchgear, L.T Main Panel Board AMF/ATS Panel Board, Power, Lighting Distribution Boards for Head Office of Bestow Interiors at D.H.A Lahore	Head Office of Bestow Interiors (Pvt.) Ltd, at Phase-4, D.H.A, Lahore-Pakistan	EPCS Switchgear Pakistan
41.	Mohmond Construction Company	Peshawar	Supply of L.T Switchgear, Lighting Control Panel Boards	Gulbahar Fly over G.T Road, Peshawar-Pakistan	WR Engineering Associates
42.	Rainmakers (Pvt.) Ltd,	152-G, D.H.A, Lahore.	Supply of L.T Switchgear, Motor Control Panels, DOL, ASD Starter with controllers	Different Projects	EPCS Switchgear Pakistan
43.	Echo-West International (Pvt.) Ltd	113-E, Gulberg-ii, Lahore	Supply of L.T Switchgear, L.T Main Panel Board, Emergency Main Panel Board, Sub Main Panel Board, Feeder Fillers, Lighting & Power Distribution Boards	King Abdullah Teaching Hospital, Mansehra-Pakistan	Pakistan Environment Planning & Architectural Consultants Ltd
44.	Flow Pak Pump Industries (Pvt.) Ltd	Suite # 7-8, 1st Floor, Sadiq Plaza, 69-The Mall, Lahore - Pakistan	Supply of L.T Switchgear, Motor Control Unit for 120HP, 80HP & 50HP Motors, Power Factor Improvement Plant 62.5KVAR 20Nos	Punjab Municipal Development Authority	Asian Consultants (pvt.) Ltd
45.	The University of Lahore	Thokar Niaz Baig, Raiwind Road, Lahore	Supply of L.T Switchgear, LT Main Panel Board, Lighting & Power Distribution Boards	The University of Lahore	The University of Lahore

46.	Feroze Khan Construction (Pvt.) Ltd	Plot#18, Block Commercial Zone, Liberty Market, Gulberg-III, Lahore	Supply of L.T Switchgear, LT Main Panel Board, AMF/ATS Panel Board, Manual Change Over Panel Board, Automatic Power Factor Improvement Plant, Lighting & Power Distribution Boards	Commercial Building at Liberty Market, Lahore	Usman Engineering Services
47.	Merin (Pvt.) Ltd	Hassan Ali Centre, M.A Jinnah Road, Karachi	Supply of L.T Switchgear, Power Distribution Boards for Escalators Qty-104 Nos.	Bus Rapid Transit System, Ferozpur Road, Lahore-Pakistan	National Engineering Service, Lahore Pakistan
48.	Stark Solutions (Pvt.) Ltd	71 Street#20, G8/1, Islamabad-Pakistan	Supply of L.T Switchgear, AMF/ATS Panel Board with MOR 100 Nos	Pakistan Telecommunication Ltd	Stark Solutions (Pvt.) Ltd
49.	Lahore University of Management Sciences (LUMS)	Sector U, D.H.A, Lahore	Supply of L.T Switchgear, Feeder Piller Panel Boards	Lahore University of Management Sciences (LUMS)	Lahore University of Management Sciences (LUMS)
50.	Kayre International (Pvt.) Ltd	Main Ferozpur Road, Lahore	Supply of L.T Switchgear, LT Main Panel Board, 600KVAR Power Factor Improvement Plant, Synchronizing Panel Board, AMF/ATS Panel Board & 2000A Bus Tie Duct	Kayre International (Pvt.) Ltd	Kayre International (Pvt.) Ltd
51.	Anarkali Tower	9-Dhani Ram Road, New Anarkali, Lahore-Pakistan	Supply of L.T Switchgear, Metering Panel Boards for various Shops	Anarkali Tower	Watts Engineering Services, Lahore-Pakistan
52.	Ideas	Centaurus, Islamabad-Pakistan	Supply of L.T Switchgear, Lighting & Power Distribution Boards	Ideas at Centaurus, Islamabad-Pakistan	AA Techno Engineers, Karachi Pakistan
53.	New Qadri Electric Company	Commercial Area Ext-2, D.H.A, Karachi-Pakistan	Supply of L.T Switchgear, Lighting & Power Distribution Boards	NIB Bank Ltd, Wapda Town, Lahore	AA Techno Engineers, Karachi Pakistan
54.	New Qadri Electric Company	Commercial Area Ext-2, D.H.A, Karachi-Pakistan	Supply of L.T Switchgear, Lighting & Power Distribution Boards	NIB Bank Ltd, Packages Branch, Lahore	AA Techno Engineers, Karachi Pakistan
55.	New Qadri Electric Company	Commercial Area Ext-2, D.H.A, Karachi-Pakistan	Supply of L.T Switchgear, Lighting & Power Distribution Boards	NIB Bank Ltd, Mughal Pura Branch, Lahore	AA Techno Engineers, Karachi Pakistan

56.	New Qadri Electric Company	Commercial Area Ext-2, D.H.A, Karachi-Pakistan	Supply of L.T Switchgear, Lighting & Power Distribution Boards	NIB Bank Ltd, Wah Cantt, Branch, Rawalpindi	AA Techno Engineers, Karachi Pakistan
57.	New Qadri Electric Company	Commercial Area Ext-2, D.H.A, Karachi-Pakistan	Supply of L.T Switchgear, Lighting & Power Distribution Boards	NIB Bank Ltd, Islamabad, Branch	AA Techno Engineers, Karachi Pakistan
58.	New Qadri Electric Company	Commercial Area Ext-2, D.H.A, Karachi-Pakistan	Supply of L.T Switchgear, Lighting & Power Distribution Boards, Cable Trays	Gull Ahmed Ideas, Islamabad	AA Techno Engineers, Karachi Pakistan
59.	Bestow Interiors (Pvt.) Ltd,	402-4 th Floor, City Tower, Main Boulevard, Gulberg-II, Lahore.	Supply of L.T Switchgear, L.T Main Panel Board, Power Factor Improvement Plant, Power & Lighting Distribution Boards	Hotel 1, Cinepex, Faisalabad	Hussnain Associates, Lahore-Pakistan
60.	Bahudin Zikria University	58-C, Garden Town, Lahore	Supply of L.T Switchgear, L.T Main Panel Board, Power & Lighting Distribution Boards	BZU, Lahore, Campus	EPCS Switchgears
61.	The University of Lahore	1-Km Defence Road, Bhotatian Chowk, Raiwind Road Lahore, Pakistan.	Supply of L.T Switchgear, Power Panel Board & Swimming Pool Distribution Boards for Teaching Hospital	The University of Lahore	International Engineers
62.	Infinity Construction Company	106A, Block T&T Abpara Raiwind Road Lahore, Pakistan.	Supply of L.T Switchgear, LT Main Panel Board, Power & Lighting Distribution Boards	Labs of The University of Lahore Gujarat Campus	International Engineers
63.	A.G Electric Company	Karachi-Pakistan	Supply of L.T Switchgear, Lighting & Power Distribution Boards	Gull Ahmed Ideas, Jhelum-Pakistan	AA Techno Engineers, Karachi Pakistan
64.	Cinepex Ltd	P.O Box 15525, Karachi Pakistan.	Supply of L.T Switchgear, L.T Main Panel Board, 250 Power Factor Improvement Plant, Power & Lighting Distribution Boards	Cinepex, Cinema King Tower, Gujranwala-Pakistan	Hussnain Associates, Lahore-Pakistan

65.	Attock Petroleum Limited	7 th Floor, Attock House, Morgah, Rawalpindi, Pakistan.	Supply, Installation, testing & Commissioning of L.T Switchgear, Variable Frequency Drive Panel Board	Attock Petroleum Limited Machike Bulk oil Terminal Sheikhpura, Pakistan	Attock Petroleum Limited
66.	Masvi interiors,	FF-318 Deans Trade center, Peshawar.	Supply of L.T Switchgear, Lighting & Power Distribution Boards	Gull Ahmed Ideas, Swat KPK, Pakistan	AA Techno Engineers, Karachi Pakistan
67.	Trans data International	B-300, Glamour Heights, Waris Road Lahore	Supply of L.T Switchgear, L.T Main Panel Board, 250 Power Factor Improvement Plant, AMF/ATS with MOR, Power & Lighting Distribution Boards	Trans data International, Johar Town, Lahore-Pakistan	EPCS Switchgears
68.	Comsats Institute of Information Technology	Comsats Institute of Information Technology, Park Road Chak Shahzad, Islamabad	Supply of L.T Switchgear, 1250A Auto Main Failure with MOR Panel Board	Comsats Institute of Information Technology, Park Road Chak Shahzad, Islamabad	Stark Industrial Solution
69.	Attock Petroleum Limited	7 th Floor, Attock House, Morgah, Rawalpindi, Pakistan.	Supply, Installation, testing & Commissioning of L.T Switchgear, Motor Control Centre	Attock Petroleum Limited Korangi Bulk oil Terminal Karachi, Pakistan	Attock Petroleum Limited
70.	NC Entertainment (Pvt.) Ltd	31-Q, Gulberg-II, Lahore-Pakistan	Supply of L.T Switchgear, L.T Main Panel Board, 250 Power Factor Improvement Plant, Motor Control Centre, Power & Lighting Distribution Boards	Universal Cinema, Emporium Mall, Johar Town, Lahore-Pakistan	Fahim, Nanji & deSouza (Pvt.) Ltd. (Karachi)
71.	Land Leisure Land Theme Parks	838-Z Block, Phase-3, D.H.A, Lahore-Pakistan	Supply of L.T Switchgear, L.T Main Panel Board, 165 Power Factor Improvement Plant, AMF/ATS Panel Board, Motor Control Centre, Power & Lighting Distribution Boards	Fun Dunya Amusement Park Model Bazar Harbanspura, Main Harbanspura Road, Lahore	Compact Electric Company (Lahore)
72.	Cinepex Ltd	P.O Box 15525, Karachi Pakistan.	Supply of L.T Switchgear, L.T Main Panel Board, 150 Power Factor Improvement Plant, Power, Lighting Distribution Boards, Cable Trays & Hanging arrangement system	Cinepex, Cinema Nayyar Mall, Gujarat-Pakistan	Hasnain Associates, Lahore-Pakistan

73.	Cinepex Ltd	P.O Box 15525, Karachi Pakistan.	Supply of L.T Switchgear, L.T Main Panel Board, 300 Power Factor Improvement Plant, AMF/ATS Panel Board, Power, Lighting Distribution Boards, Cable Trays & Hanging arrangement system	Cinepex, Cinema Safa Mall, Islamabad- Pakistan	Hasnain Associates, Lahore-Pakistan
74.	Atcon Construction Ltd	3.5-KMS DEFENCE ROAD, OFF RAIWIND ROAD, Lahore	Supply of L.T Switchgear, L.T Main Panel Board	University of Lahore (Islamabad Campus)	Mr. Akbar Ali
75.	National Logistic Cell (NLC)	Thokar Niaz Baig, Multan Road, Lahore	Supply of L.T Switchgear, L.T Main Panel Board	Pakistan Railway (Okara Railway Station)	National Engineering Services (Nespak)
76.	Leisure Land Theme Parks	838-Z Block, Phase-3, D.H.A, Lahore- Pakistan	Supply of L.T Switchgear, L.T Main Panel Board, 165 Power Factor Improvement Plant, AMF/ATS Panel Board, Motor Control Centre, Power&Distribution	Fun Dunya Safari Park, Lahore	Green Lights, Lahore
77.	Hyosung Corporation (Korean Company)	82/1, F- Block, Model Town, Lahore	Supply of L.T Switchgear, Power & Lighting Distribution Boards	Gujarat 220kV substation Project	National Engineering Services (Nespak)
78.	Saif Construction	349-A, Johar Town, Lahore	Supply of L.T Switchgear, LT Main Panel Board, 300KVAR Power Factor Improvement Plant, Power & Lighting Distribution Boards	Sports Complex Kasur	National Engineering Services (Nespak)
79.	Yesserv	3F3, Al Farukh Heights St 22 SEC J, DHA- III, Islamabad	Supply of L.T Switchgear, LT Main Panel Board, Plant, Power & Lighting Distribution Boards	Up gradation of EPI Labs World Health Organization, Islamabad	Yes serves
80.	Crescent Star Foods (Pvt.) Ltd	2 nd Floor Nadir House, II Chundrigar Road, Karachi	Supply of L.T Switchgear, LT Main Panel Board, 250KVAR Power Factor Improvement Plant, AMF Panel Board, Phase Reversal Panel Board, Power & Lighting Distribution Boards	Golden Chick 81-Y Block Commercial Area, Phase-III, DHA, Lahore	ECONS (MEP Consultant) Karachi
81.	Ayaz Builders (Pvt.) Ltd	Islamabad	Supply of L.T Switchgear, LT Main Panel Board, 300KVAR Power Factor Improvement Plant, Power & Lighting Distribution Boards 08 No Buildings	Khawaja Fareed University Rahim Yar Khan	National Engineering Services (Nespak)

82	B n Q	Lahore	Supply of L.T Switchgear, LT Main Panel Board, 300KVAR Power Factor Improvement Plant, Power & Lighting Distribution Boards 01 No Buildings	Khawaja Fareed University Rahim Yar Khan	National Engineering Services (Nespak)
83	Chint Electric	DHA Lahore	Supply of L.T Switchgear, Power & Lighting Distribution Boards	Rahim Yar Khan, Dadu& Morro 220kV substation Project	National Engineering Services (Nespak)
83	Kims College	Lahore	Supply of L.T Switchgear, LT Main Panel Board, 300KVAR Power Factor Improvement Plant, Power & Lighting Distribution Boards		
84	Zorlu Energy	Karachi	Supply of L.T Switchgear, Power & Lighting Distribution Boards	Quaid-e-Azam Solar Power Bawalpur	
85	Alam Khan Brothers	Lahore	Supply of Lighting Control Panel	Canal View Herbanspura Lahore	National Engineering Services (Nespak)
86	Rizcon Engineering	Lahore	Supply of L.T Switchgear, Power & Lighting Distribution Boards	Pakistan Engineering Council Lahore	
87	Rizcon Engineering	Lahore	Supply of L.T Switchgear, Metering Panel & Distribution Boards	Labour Flat Multan	Master Consultant
86	Alam Khan Brothers	Lahore	Supply of Lighting Control Panel	Mini Market Lahore	Engineering Associate
87	IKAN Engineering	Lahore	Supply of LT Panel& Distribution Board	DHQ Jehlum & Narowal	Asian Consultant
88.	Cinepex Ltd	P.O Box 15525, Karachi Pakistan.	Supply of L.T Switchgear, L.T Main Panel Board, 400 Power Factor Improvement Plant, AMF/ATS Panel Board, Power, Lighting Distribution Boards, Cable Trays & Hanging arrangement system	Cinepex, Cinema World Trade Center WTC, Islamabad-Pakistan	Hasnain Associates, Lahore-Pakistan

89.	Cinepex Ltd	P.O Box 15525, Karachi Pakistan.	Supply of L.T Switchgear, L.T Main Panel Board, 350 Power Factor Improvement Plant, AMF/ATS Panel Board, Power, Lighting Distribution Boards, Cable Trays & Hanging arrangement system	Cinepex, Cinema Ammanah Mall, Link Road Model Town, Lahore-Pakistan	Hasnain Associates, Lahore-Pakistan
90.	Cinepex Ltd	P.O Box 15525, Karachi Pakistan.	Supply of L.T Switchgear, L.T Main Panel Board, 600 Power Factor Improvement Plant, AMF/ATS Panel Board, Power, Lighting Distribution Boards, Cable Trays & Hanging arrangement system	Cinepex, Cinema Packages Mall, Lahore-Pakistan	Hasnain Associates, Lahore-Pakistan
91.	Cinepex Ltd	P.O Box 15525, Karachi Pakistan.	Supply of L.T Switchgear, L.T Main Panel Board, 300 Power Factor Improvement Plant, AMF/ATS Panel Board, Power, Lighting Distribution Boards, Cable Trays & Hanging arrangement system	Cinepex, Cinema Mall of Sialkot, Sialkot-Pakistan	Hussnain Associates, Lahore-Pakistan
92.	Ayaz Builders (Pvt) Ltd	Islamabad	Supply of L.T Switchgear, L.T Main Panel Board, Sub Main Panel Board, Power, Lighting Distribution Boards for different 8 buildings	Khawaja Fareed University of Engineering and Information Technology, Rahim Yar Khan, Pakistan	National Engineering Services (Nespak)
93.	B&Q (Pvt) Ltd		Supply of L.T Switchgear, L.T Main Panel Board, Sub Main Panel Islamabad Board, Power, Lighting Distribution Boards for different 2 buildings	Khawaja Fareed University of Engineering and Information Technology, Rahim Yar Khan, Pakistan	National Engineering Services (Nespak)
94.	M/S Sohail Iftikhar and Company	Multan	Supply of L.T Switchgear, MCC Panel Board With PFI100KVR, Manual Change over Panel Distribution Boards	Wasa Multan Inner By Pass Multan	National Engineering Services (Nespak)
95	Premier Developer	Faisalabad	Supply of L.T Switchgear Load take of Box	Lyallpur Galleria	Hussnain Associates, Lahore-Pakistan
96	Wattan Builder	Multan	Supply of L.T Switchgear, MCC Panel Board With PFI300KVR, Manual Change over Panel	Wasa Multan Vehari Chowk Multan	National Engineering Services (Nespak)
97	Main Waqas Engineering and Brother	Multan	Supply of L.T Switchgear, Motor control unit & 300KVAR Power Factor Improvement Plant	Wasa Multan	National Engineering Services (Nespak)

98	Fantasy Group	Gujrawala	Supply of L.T Switchgear, Power & Lighting Distribution Boards	Fun Dunya Fazal Centre	Compact Electric Co
99	Rizcon Engineering	Lahore	Supply of L.T Switchgear, Distribution Boards	Pakistan Engineering Conusil	Asian Consultant
100	Rizcon Engineering	Lahore	Supply of L.T Switchgear, Power & Lighting Distribution Boards	Sports Complex Pholnagar, Kasur	
101	Mughal E Azam Banquet Hall	Garden Town, Lahore	Supply of L.T Switchgear, Lighting, Power Distribution Boards, LT Main Panel Board with 200KVAR Power Factor Improvement Plant	Commercial building Plan by Malino, Garden Town, Lahore	International Engineers (Chartered Electrical Engineers)
102	Salman Enterprises	Islamabad	Supply of L.T Switchgear, Lighting, Power Distribution Boards,	DHQ Lodhran	Asian Consultant
103	Salman Enterprises	Islamabad	Supply of L.T Switchgear, Lighting, Power Distribution Boards,	DHQ Rajan Pur	Asian Consultant
104	Salman Enterprises	Islamabad	Supply of L.T Switchgear, Lighting, Power Distribution Boards,	DHQ Taunsa Sharif	Asian Consultant
105	Salman Enterprises	Islamabad	Supply of L.T Switchgear, Lighting, Power Distribution Boards,	DHQ Muzaffar Garh	Asian Consultant
106	Salman Enterprises	Islamabad	Supply of L.T Switchgear, Lighting, Power Distribution Boards,	DHQ Sujjahabad	Asian Consultant
107	Progressive International	Lahore	Supply of L.T Switchgear, Lighting, Power Distribution Boards,	DHQ Toba Tak Singh	Asian Consultant
108	Progressive International	Lahore	Supply of L.T Switchgear, Lighting, Power Distribution Boards,	DHQ Jhung	Asian Consultant
109	Bestow Interiors	Lahore	Supply of L.T Switchgear, LT Main Panel Board No.1 & 02, Power Factor Improvement Plant No.01 & 02, 250KVAR	Corporate Office New Lahore City (Zaitoon Group)	Rahim Associates

			Auto Load Sharing & Synch. Panel Board Lighting, Power Distribution Boards,		
110	Ghousia Engineering & Construction (Pvt.) Ltd	Suite No.3 3 rd Floor, Ashrafi Tower Liberty Market, Gulberg-iii, Lahore	Supply of L.T Switchgear, LT Main Panel Board, Lighting, Power Distribution Boards,	Govt. Boys High School, Gajjumatah, Lahore	National Engineering Services (Nespak)
111	Ghousia Engineering & Construction (Pvt.) Ltd	Suite No.3 3 rd Floor, Ashrafi Tower Liberty Market, Gulberg-iii, Lahore	Supply of L.T Switchgear, LT Main Panel Board, AMF/ATS Panel Board with Lighting Control Panel Board	Gurumanget Road Under Pass, Lahore	National Engineering Services (Nespak)
112	Ghousia Engineering & Construction (Pvt.) Ltd	Suite No.3 3 rd Floor, Ashrafi Tower Liberty Market, Gulberg-iii, Lahore	Supply of L.T Switchgear, LT Main Panel Board, Sub Main Panel Board, Emergency Sub Main Panel Boards, Power Factor Improvement Plant 600KVAR, Lighting, Power Distribution Boards and 2500A TP+N Bus Tie Duct	University of Health Science, Lahore	G3 Engineering Consultants (Pvt.) Ltd
113	Panther Tyres Ltd	29.5KM, Joinwala More, Lahore Sheikhpura Road, Sheikhpura	Supply of L.T Switchgear, LT Main Panel Board, Sub Main Panel Board, Motor Control Centre	Panther Tyres Ltd (Mian Tyre Ltd)	Panther Tyres Ltd
114	Divine Enterprises	Johar Town Lahore	Supply of L.T Switchgear, LT ATS Panel Board, LT Feeder Pillar	DHA Bahawalpur	DHA Bahawalpur
115	Misak Ul Mall	Faisalabad	Supply of L.T Switchgear, LT Main Panel Board, Metering Panel Board, Emergency Main Panel Boards, Lighting, Power Distribution Boards and Cable Trays	Misak Ul Mall Faisalabad	Husnain Associates
116	National Logistic Cell (NLC)	Thokar Niaz Baig, Lahore	Supply of L.T Switchgear, LT Main Panel Board, Sub Main Panel Board, Emergency Sub Main Panel Boards, Power Factor Improvement Plant	University of Engineering & Technology, Narowal	National Engineering Services (Nespak)

			600KVAR, Lighting, Power Distribution Boards		
117	TA Builders	Bahawalpur	Supply of L.T Switchgear, LT Main Panel Board, Sub Main Panel Board, Emergency Sub Main Panel Boards, Lighting, Power Distribution Boards	University of Gujrat, Narowal Campus	G3 Engineering Consultants (Pvt.) Ltd
118	Plant & Plant	Islamabad	Supply of L.T Switchgear, 4x40HP ASD Starters & LT Service Boxes	DHA Bahawalpur	DHA Bahawalpur
119	Fatima Fertilizer Company Ltd	Lahore	Supply of L.T Switchgear, Distribution Boards	Sadiqabad, Distt RYK	Fatima Group
120	NLC	Narowal	Supply of L.T Switchgear, Distribution Boards, Main Panel Board	UET Lhr, Narowal Campus	National Logistic Cell
121	Synthetic Products Enterprises (Pvt.) Ltd	127-S, Quaid-e-Azam, Industrial Estate Kot Lakhpat, Lahore.	Supply of L.T Switchgear, L.T Main Panel Board, Change Over Panel Board with 1200KVAR PFI Plant, Power and Lighting Distribution Boards	SPEL (Pvt.) Ltd	Synthetic Products Enterprises (Pvt.) Ltd
122	Mumtaz & Co	House# 5B, Hashmi Garden, Near Noor Mahal, D.H.A Bahawalpur, Pakistan	Supply of L.T Switchgear, Distribution Boards, Main Panel Board	DHA Bahawalpur	DHA Bahawalpur
123	DHA Bahawalpur	Baba Naseer Road, Bahawalpur Cantt, Bahawalpur, Punjab-Pakistan,	Supply of L.T Switchgear, Distribution Boards, Main Panel Board	DHA Bahawalpur	DHA Bahawalpur

CERTIFICATES

NOTICE
"This License is liable to revision as per firm's profile/credentials as and when disclosed, in the light of PEC Act, Byelaws and policy"



Serial No. **454777**
PEC-11

PAKISTAN ENGINEERING COUNCIL
Licence No: **72831** Category: **C6** Validity: **30 June, 2020**
LICENCE OF PAKISTANI CONSTRUCTOR/OPERATOR
(Under the bye-laws of Pakistan Engineering Council 1987)

This is to certify that M/s **EPCS SWITCHGEAR** (Licencee), with its registered office at **12-C-1ST FLOOR COMMERCIAL AREA, PAK ARAB SCHEME, LAHORE**, have been licenced under Construction and Operation of Engineering Works Bye-laws 1987, until the validity date to construct/operate engineering works, the construction/capital cost of which does not exceed **Rs. 25 (TWENTY FIVE) million** provided the licencee fulfils all the qualification requirements prescribed by Client or Employer for a particular engineering work; and subject to the licencee continuing to fulfill all the requirements of the bye-laws.

Field of Specialization **EE04 - EE06 - (TWO ONLY)** (Specialization Code Nos. for detail see overleaf)

Date of Issue: **Oct 2, 2019**
(Lahore)



Registrar
Pakistan Engineering Council,
Islamabad.

Note:

1. This licence is valid upto 30-06-2020 and shall be renewed before 30 September, 2020 without late payment surcharge. However, application for 2020-2021 for renewal may be submitted to the Council after 5 May, 2020.
2. The employer must ensure employment of engineers whose names are mentioned on backside of the licence. The Consulting Engineer (the Engineer Incharge in case the consultant is not appointed) shall monitor the number of engineers employed by the Constructor/Operator and inform the Council accordingly.
3. Owner(s) of the firm shall be held responsible, if any information, document or paper submitted by him/them is found incorrect or forged.

1
7
8
9
4
4

ISO 9001:2008

EPCS

SWITCHGEAR

12-C, 1st FLOOR, COMMERCIAL
AREA, PAK ARAB HOUSING SCHEME,
17-KM FEROPUR ROAD, LAHORE

has passed assessment for membership of
ITCC International Limited ISO 9001:2008
Quality Management Certification Scheme.

Scope of Activity:
MANUFACTURER OF
ELECTRICAL SWITCHGEAR.

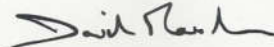
Exclusion: 7.3

Certificate No:

4140960

valid until end March 2019

Approved by:



D Marsden BA (Hons)



Registered Office: 310 Wellingborough Road, Northampton, NN1 4BR, UK
Gulf Office : P.O Box 115085, Tel:+971 2 6435339, Fax: +971 2 6435655



ALLIED ENGINEERING CONSULTANTS (PVT) LTD

years
of **53**
Nation Building

CIVIL - POWER - MECHANICAL - INDUSTRIAL - HIGHWAYS - BRIDGES ENGINEER-ARCHITECTS-PLANNERS-INTERIOR DESIGNERS LANDSCAPE / ENVIRONMENT SPECIALIST / HUMAN RESOURCE MANAGEMENT EXPERTS, PROFESSIONALS IN TRAINING EXPERT / SURVEYORS / EVALUATORS / DESIGN - BUILD & TURNKEY-EPC.



No.AEC-LHR-VN-0135

7th Feb, 2019

CERTIFICATE OF ENLISTMENT
AS APPROVED SUPPLIER
(Electrical Switchgear Manufacturer)

This letter serves as an "Assessment Certificate" for enlistment of **EPCS Switchgears (Electrical Power and Control System)**, Head Office Address: **12-C 1st Floor, Commercial Area, Pak Arab Housing Scheme, 17-KM, Ferozpur Road Lahore**. It is being issued after a complete review of EPCS Switchgears' product portfolio which is found to be manufactured under International Quality Standards.

The product, its related documentation and specifications have been examined and checked thoroughly by our Subject and Field Experts. The quality of the product line was examined and validated through Certificates and Test Reports provided by the vendor along with their Company Profile in order to ensure compliance with required industry standards and performance delivery.

In our view, EPCS Switchgears (Electrical Power and Control System) possesses adequate experience, resources and capacity to meet the requirement of desired quality, delivery and implementation mechanisms for national level projects in Pakistan.

We therefore, approve EPCS Switchgears (Electrical Power and Control System) as a qualified supplier on projects undertaken by **Allied Engineering Consultants (Pvt.) Ltd.** The validity of this letter is for one year till **7th Feb, 2020**.

Respectfully,

For Allied Engineering Consultants (Pvt.) Ltd.

(Engr. Alina Bashir)
Manager Projects
MSc. Geotechnical Engineering
BSc. Civil Engineering
MPEC, MSCF, MIEP.



AEC House 19-A, Hali Road, Gulberg-II, Lahore-54660, Pakistan.
Tel: +92-42-35756752 or 35758433, 35875104 Fax: 35875105

E-mail: alliedec@gmail.com Website: www.alliedec.com
NTN: 22-16-1710537 Quin Registration Number: 0005923

Book No.B 07812

QDP/7.5/MSD/F-04

Serial No.B 781181

MEMBERSHIP CERTIFICATE

MEMBERSHIP NO: 85768-A

Name & address of Chamber **The Lahore Chamber of Commerce & Industry**
XXXXXXXXXX

11 Shara-e-Aiwan-e-Sanat-o-Tijarat, Lahore.

(Affiliated with the Federation of Pakistan Chambers of Commerce & Industry)

CERTIFIED that **M/s EPCS SWITCHGEAR**

(name and address of Member Firm / Company)
**12-C 1ST FLOOR COMMERCIAL AREA, PAK ARAB HOUSING SCHEME, 17-KM
FEROZPUR ROAD, LAHORE**

G.S.T. No. **03-00-3244-523-19** N.T.N. No. **3244523-7**

is a member of this Chamber **Since 15-Sep-2015**
XXXXXXXXXX



THIS CERTIFICATE shall be valid upto the **31 MAR 2020** unless
(date)
otherwise notified to the NTN / GST Registration authority / Scheduled Bank
concerned.



Given on this **14** day of **Jan** 20 **19**...

Signature of Secretary General

Countersigned by

FAHEEM-UR-REHMAN
Vice President 2018-2019

PEPAC PAKISTAN ENVIRONMENTAL PLANNING &
ARCHITECTURAL CONSULTANTS LTD.

Islamabad (HEAD OFFICE) D-24, Rashid Plaza, Blue Area (F-6) Tel: 0204721, 9212532, Fax: 02-51-9224341
Email: pepactd@gmail.com Web: www.pepac.com.pk

Ref: E&M/PEPAC/610/124

August 18, 2012

M/S EPCS SWITCHGEAR
Plot#114, Street2, Mehboob Garden,
18KM Ferozpur Road,
Lahore

Subject: ENLISTMENT AS MANUFACTURER FOR HT<
SWITCHGEAR/ELECTRICAL PANEL BOARDS

Reference: Your application No. EPCS/Int/12/18 dated 02-06-2012.

After considering your application and evaluation of documents attached with the application, we are pleased to inform you that your company has been pre-qualified as manufacturer for an initial period of one year w.e.f 01-08-2012 to 30-07-2013.

Please note that your performance will be continuously monitored and if found to be below the desired level, the approval will be with drawn.

You will have to apply for the renewal of your firm atleast one month before its expiry. You are also advise to intimate immediately if, there is any change of status/address of your company in future.

We look forward for your active participation in our current/future projects.

Yours faithfully,
For PAKISTAN ENVIRONMENTAL PLANNING &
ARCHITECTURAL CONSULTANTS LIMITED



(Usman Ali Khan)
Consultant (E&M)

Mansehra: H # 11, Sector-B Ghazikot Township Tel/Fax: 0997-302591
Lahore: Flat # 11, 2nd Floor, 136-P, Mini Market, Gulburgil, Tel/Fax: 042-35876972
Peshawar: Suit B-15, Spinzer Plaza, University Road. Tel/Fax: 091-5706174
Karachi: E.O.B.I, Hous 2nd Floor (Ex-Awami Markaz) Shakra-e-Faisal Tel: 111-33500 Ext 2446



TAXPAYER REGISTRATION CERTIFICATE

(Under Section 181C of the Income Tax Ordinance 2001)

Registration No. 3510269557367



3510269557367

Date of Registration 17-Jan-2009

Type of Person Individual

Name MEHMOOD AHMED

Address 12-C, 1ST FLOOR, COMMERCIAL AREA, PAK ARAB HOUSING SCHEME, 17-KM
FEROZEPUR ROAD, Lahore Nishter Town

Tax Office RTO-II LAHORE

Activity Type Business

Inland Revenue Service

**This is a computer generated certificate and,
hence, no signatures are required.**

Displaying of Taxpayer Registration Certificate is mandatory as
provided under section 181C of Income Tax Ordinance 2001.

This is not a valid evidence of being a "filer" for the purposes of clauses (23A) and (35C)
of sections 2 and 181A of the Income Tax Ordinance 2001.



Date of Print 22-Aug-2019

TAXPAYER REGISTRATION CERTIFICATE

Page 1 of 2

ORIGINAL

NTN 3244523-7

Category INDIVIDUAL

Status RESIDENT

CNIC / Passport No. 35102-8955736-7 **Birth Date:** 15-JUL-1984

Name MEHMOOD AHMED

Address GOHAR JAGLEER P.O USMAN WALA TLM. & DISTT.,KASUR, DISTT./KASUR/PUNJAB

Principal Activity OTHER PERSONAL SERVICE ACTIVITIES N.F.C.

Other Activities 1) IMPORTER/EXPORTER

Registered for

Income Tax	w.e.f	17-JAN-2009
Sales Tax (SERVICES)	w.e.f	15-JUL-2010

Representative's

CNIC/ NTN	35102-8955736-7
Name	MEHMOOD AHMED
Email Address	airnsassociates@gmail.com

Tax Office RTO LAHORE

Business Name

- ELECTRICAL POWER AND CONTROL SYSTEMS
SUITE NO.22-M2,CENTRAL PLAZA BARKAT MARKET,NEW GARDEN TOWN,LAHORE,LAHORE,PUNJAB
- ELECTRICAL POWER AND CONTROL SYSTEM
SUITE NO.22-M2,CENTRAL PLAZA BARKAT MARKET,NEW GARDEN TOWN,LAHORE,LAHORE,PUNJAB

This Certificate Shall be prominently displayed at a conspicuous place of the premises in which business or work for gain is carried on, NTN number is also required to be indicated on the signboard.

NOTE:- The NTN must be written on all returns, payment challans, invoices, letter heads, advertisements, etc. and all correspondence made with the tax department.



ROCRT-0720 (K-3)152442

Date of Printing: 15-JUL-2010



Faysal Bank Contact # 111 06 06 06
Garden Town Branch, Lahore , 4-
Albak Block New Garden Town Lahore
Pakistan
39752148339771



Sole Proprietorship Certificate

Date:25 JUL 2016

This is to certify that "Epcs Switchgear" is maintaining a **CURRENT** Account # **01300060009706** with Faysal Bank Limited since **03-MAY-10**.

As per the record provided to us, **Mehmood Ahmed** bearing CNIC 35102-6955736-7 is the sole proprietor of the above concern.

This certificate is issued on the specific request of the customer without any risk or responsibility on part of Faysal Bank Limited or any of its employees.

For Faysal Bank Limited

A handwritten signature in black ink, appearing to read "Faysal", written over a horizontal line.

FAYSAL AZIM LEHRI
A-108

Authorized Signature

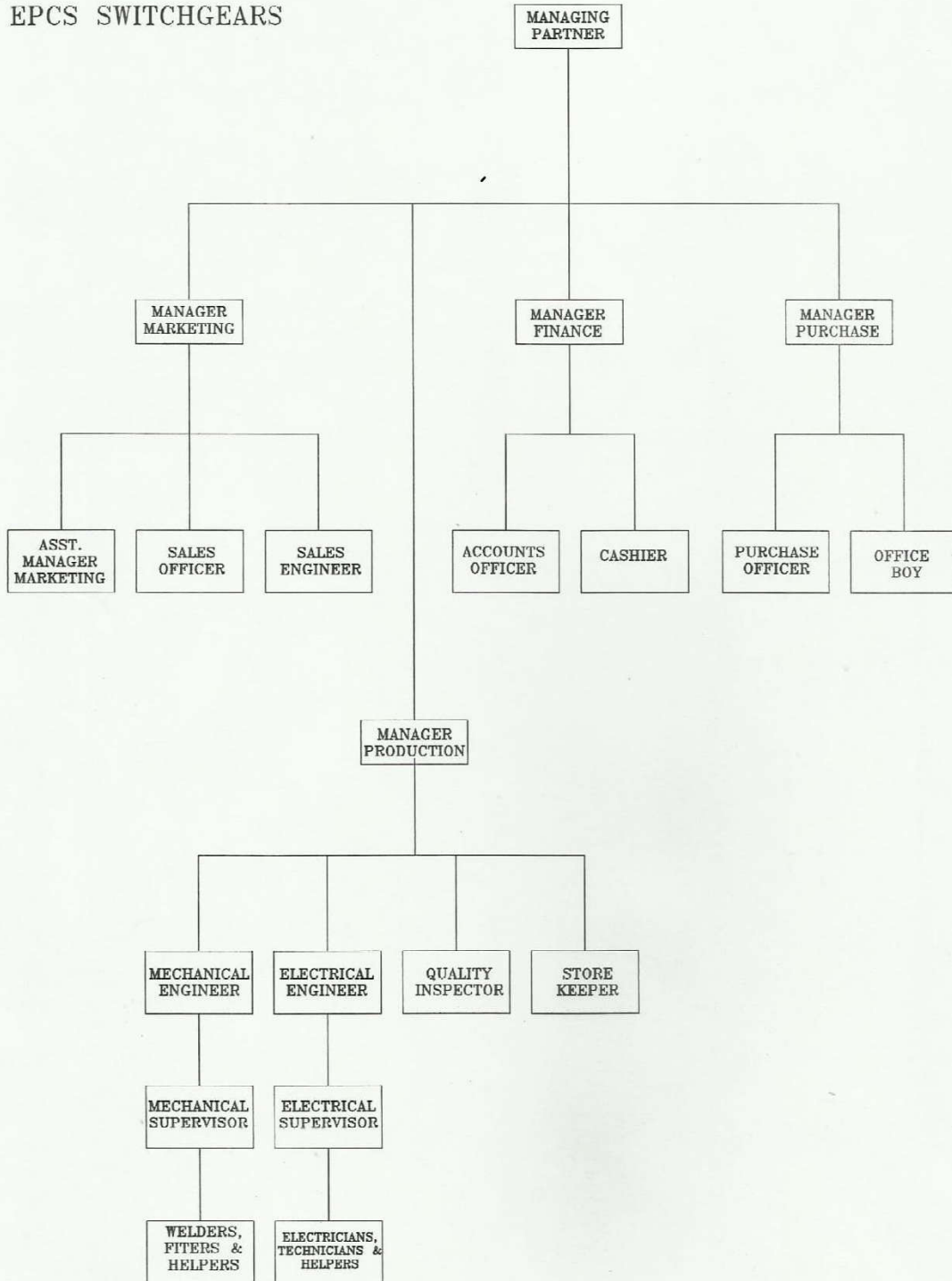
A handwritten signature in black ink, appearing to read "Azeem", written over a horizontal line.

Azeem Ahmad
B-87

Authorized Signature

Registered Office
Faysal House,
St-02, Shahrah-e-Faysal
Karachi-Pakistan
www.faysalbank.com

ORAGNIZATION CHART
EPCS SWITCHGEARS



LIST of TOOLS & PLANTS

Sl.	Description of Machinery
• MECHANICAL WORKSHOP	
01.	Mechanical Sharing Machine for Sheet Cutting upto 6mm
02.	Hydraulic Bending Press for Sheet Bending upto 6mm
03.	Mechanical Bending Machine
04.	Heavy Duty Mechanical Press table size 300*300mm
05.	Bus Bar Cutting Machine.
06.	Bus Bar Bending Press Hydraulic
07.	Bus Bar Drill Machine With 06Nos. Dies
08.	Pedestal Drill Machine 05 Nos.
09.	Many Nos. of Hand Tools like Pliers, screw Drivers, Wrench, Side Cutter, Nose Pliers etc.
• ELECTRICAL WORKSHOP	
01.	Electric welding Transformer.
02.	Electric welding Transformer.
03.	Spot Welding Machine
04.	High Voltage Test bench
05.	Insulation Test Set
06.	Voltage Test Set
07.	Earth Tester
08.	Multi Meter
09.	Lux Meter
10.	Tong Tester
• PAINT SHOP	
01.	Power Coating electrostatic Machine
02.	Automatic temperature controlled gas oven for backing of paint.
03.	Automatic Phosphate Plant.